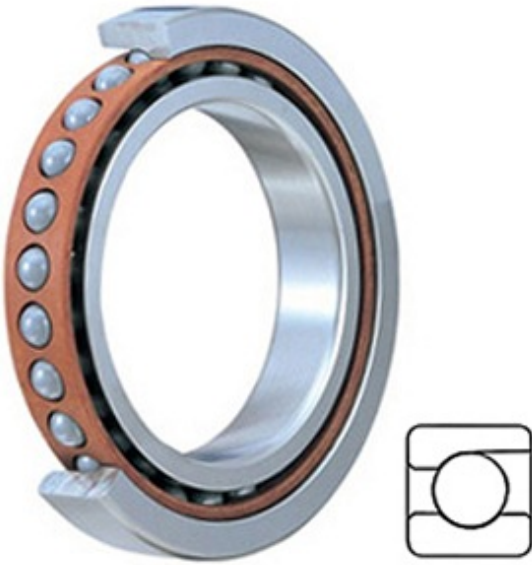




## Bearing Parts Trade Co., Ltd.



2MM9108WI SUH Bearing 2D drawings and 3D CAD models

1.575 Inch | 40 Millimeter x 2.677 Inch | 68  
Millimeter x 0.591 Inch | 15 Millimeter TIMKEN  
2MM9108WI SUH Precision Ball Bearings

Bearing No. 2MM9108WI SUH

Category	Precision Ball Bearings
Inventory	0.0
Manufacturer Name	TIMKEN
Minimum Buy Quantity	N/A
Weight	0.186
EAN	0087796254176
Product Group	B04270
Enclosure	Open
Precision Class	ABEC 7   ISO P4
Material - Ball	Steel
Number of Bearings	1 (Single)
Contact Angle	15 Degree
Preload	Heavy
Raceway Style	1 Rib Outer Ring
Cage Material	Phenolic
Rolling Element	Ball Bearing
Mounting Arrangement	Universal
Flush Ground	Yes
Inch - Metric	Metric
Other Features	Single Row   Angular Contact   Super High Precision
Long Description	40MM Bore; 68MM Outside Diameter; 15MM Width; Open Enclosure; ABEC 7   ISO P4 Precision;



## Bearing Parts Trade Co., Ltd.

	Steel Ball Material; 1 (Single) Bearings; 15 Degree Contact Angle; Phenolic Cage Material; 1 Rib Outer Ring Rac
Category	Precision Ball Bearings
UNSPSC	31171531
Harmonized Tariff Code	8482.10.50.28
Noun	Bearing
Keyword String	Angular Contact Ball
Manufacturer URL	<a href="http://www.timken.com">http://www.timken.com</a>
Manufacturer Item Number	2MM9108WI SUH
Weight / LBS	0.41
B	0.591 Inch   15 Millimeter
d	1.575 Inch   40 Millimeter
D	2.677 Inch   68 Millimeter